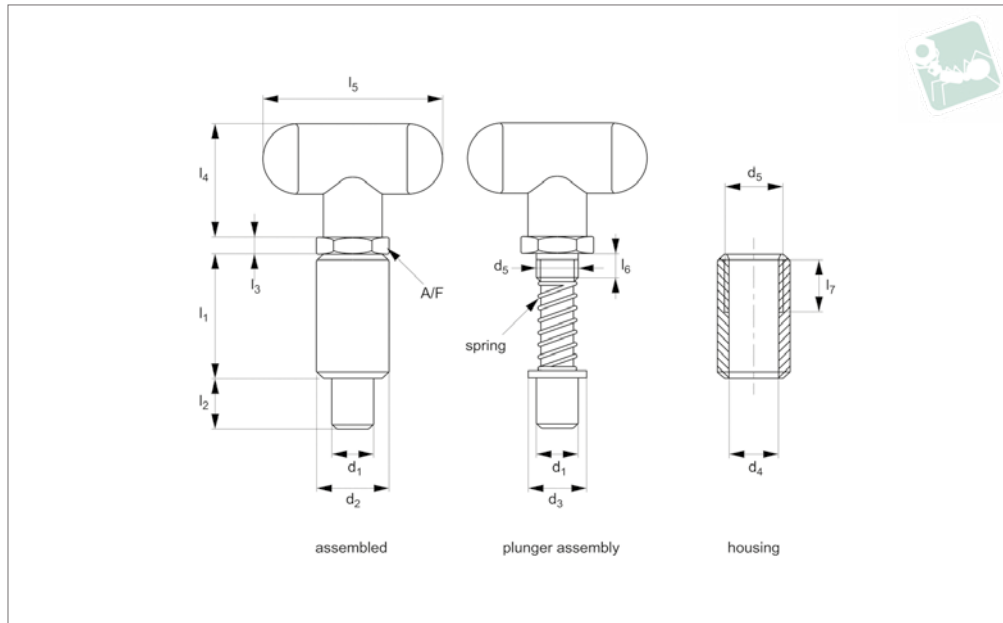




Spring Loaded Pin - Inch - T-Handle non-locking

Spring Loaded Pins



SL2016

SPRING LOADED PINS

Material

Steel Type-

Housing: Steel C1038, not plated.

Plunger assembly: Steel C1038, zinc plated.

Handle: Thermoplastic, black.

Stainless Steel Type-

Housing: Stainless Steel AISI 303.

Plunger assembly: Stainless Steel AISI 303.

Handle: Thermoplastic, black.

Aluminium Type-

Housing: aluminium 6061-T6.

Plunger assembly: Steel C1038, zinc plated.

Handle: Thermoplastic, black.

Technical Notes

Force required to lift handle approx. 2,5Kg.

For both the steel and aluminium plungers, tensile strength is 620 N/mm² except for largest pin size being 400 N/mm².

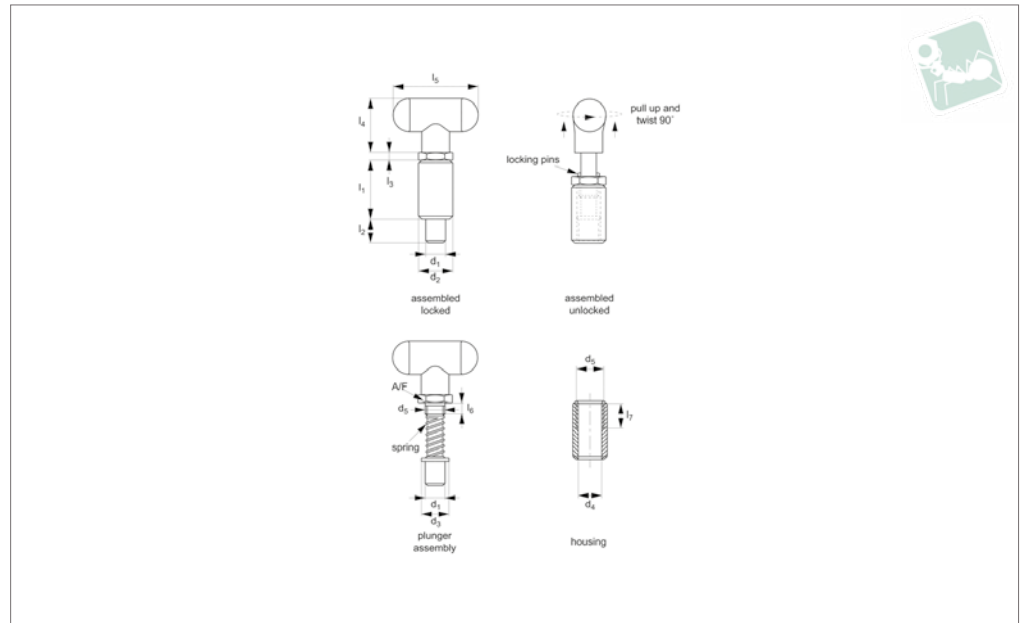
Tips

Housing and plunger assembly supplied as separate elements, this allows housing to be welded in place without damage to plastic handle of plunger assembly. Spring loaded pin is non-locking, pin simply springs back when lever released.

Order No.	Material	d ₁	d ₂	l ₁	l ₂	l ₃	l ₄	l ₅	l ₆	l ₇	d ₃	d ₄	d ₅	A/F
		+0.05 -0.1	+0.00 -0.12											
SL2016.I25-150-C	Steel	6,35 (1/4")	25.40	38.1	14.3	4.75	36.5	57.1	11.2	21.9	16.15	16.5	3/4"-10	22.3
SL2016.I37-150-C	Steel	9,53 (3/8")	25.40	38.1	14.3	4.75	36.5	57.1	11.2	21.9	16.15	16.5	3/4"-10	22.3
SL2016.I50-150-C	Steel	12,70 (1/2")	25.40	38.1	14.3	4.75	36.5	57.1	11.2	21.9	16.15	16.5	3/4"-10	22.3
SL2016.I50-225-C	Steel	12,70 (1/2")	25.40	57.1	14.3	4.75	36.5	57.1	11.2	21.9	16.15	16.5	3/4"-10	22.3
SL2016.I62-225-C	Steel	15,87 (5/8")	25.40	57.1	14.3	4.75	36.5	57.1	11.2	21.9	16.15	16.5	3/4"-10	22.3
SL2016.I25-150-A	Aluminium	6,35 (1/4")	25.40	38.1	14.3	4.75	36.5	57.1	11.2	21.9	16.15	16.5	3/4"-10	22.3
SL2016.I37-150-A	Aluminium	9,53 (3/8")	25.40	38.1	14.3	4.75	36.5	57.1	11.2	21.9	16.15	16.5	3/4"-10	22.3
SL2016.I50-150-A	Aluminium	12,70 (1/2")	25.40	38.1	14.3	4.75	36.5	57.1	11.2	21.9	16.15	16.5	3/4"-10	22.3
SL2016.I50-225-A	Aluminium	12,70 (1/2")	25.40	57.1	14.3	4.75	36.5	57.1	11.2	21.9	16.15	16.5	3/4"-10	22.3
SL2016.I62-225-A	Aluminium	15,87 (5/8")	25.40	57.1	14.3	4.75	36.5	57.1	11.2	21.9	16.15	16.5	3/4"-10	22.3
SL2016.I37-150-S	Stainless	9,53 (3/8")	25.40	38.1	14.3	4.75	36.5	57.1	11.2	21.9	16.15	16.5	3/4"-10	22.3
SL2016.I50-150-S	Stainless	12,70 (1/2")	25.40	38.1	14.3	4.75	36.5	57.1	11.2	21.9	16.15	16.5	3/4"-10	22.3
SL2016.I50-225-S	Stainless	12,70 (1/2")	25.40	57.1	14.3	4.75	36.5	57.1	11.2	21.9	16.15	16.5	3/4"-10	22.3



SL2018



Material

Steel Type-

Housing: Steel C1038, not plated.
Plunger assembly: Steel C1038, zinc plated.
Handle: Thermoplastic, black.

Stainless Steel Type-

Housing: Stainless Steel AISI 303.
Plunger assembly: Stainless Steel AISI 303.
Handle: Thermoplastic, black.

Aluminium Type-

Housing: aluminium 6061-T6.

Plunger assembly: Steel C1038, zinc plated.

Handle: Thermoplastic, black.

Technical Notes

Force required to lift handle approx. 2,5Kg.

For both the steel and aluminium plungers, tensile strength is 620 N/mm² except for largest pin size being 400 N/mm².

Tips

Housing and plunger assembly supplied as

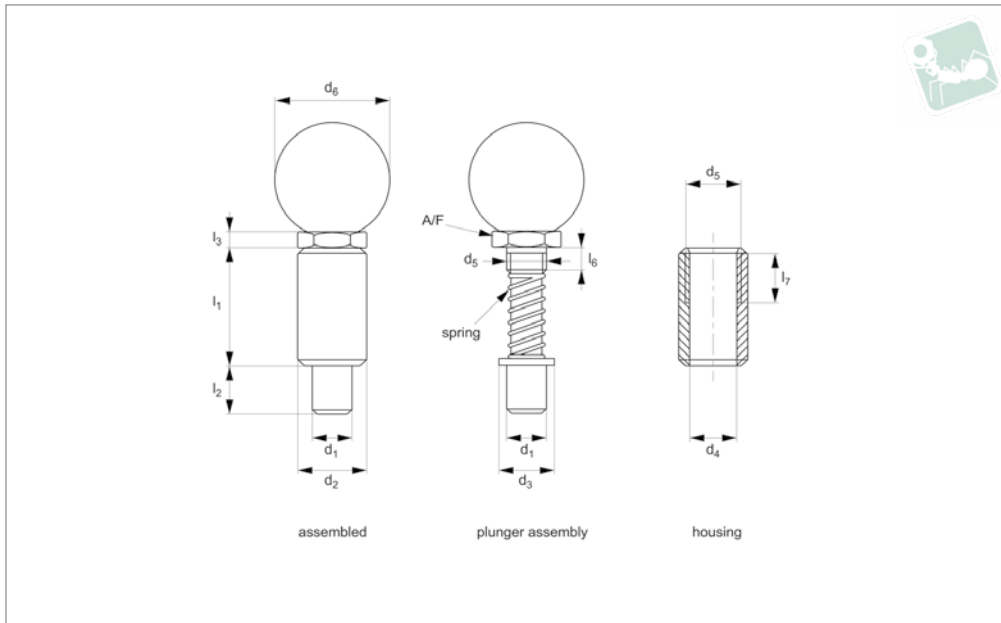
separate elements, this allows housing to be welded in place without damage to plastic handle of plunger assembly. Spring loaded pin can be „locked“ to enable pin to be held in retracted/ non-projecting position. Pull back lever, turn 90° to engage „locking“.

Order No.	Material	d ₁ +0.05 -0.1	d ₂ +0.00 -0.12	l ₁	l ₂	l ₃	l ₄	l ₅	l ₆	l ₇	d ₃	d ₄	d ₅	A/F
SL2018.I25-150-C	Steel	6,35 (1/4")	25.40	38.1	14.3	4.75	36.5	57.1	11.2	21.9	16.15	16.5	3/4"-10	22.3
SL2018.I37-150-C	Steel	9,53 (3/8")	25.40	38.1	14.3	4.75	36.5	57.1	11.2	21.9	16.15	16.5	3/4"-10	22.3
SL2018.I50-150-C	Steel	12,70 (1/2")	25.40	38.1	14.3	4.75	36.5	57.1	11.2	21.9	16.15	16.5	3/4"-10	22.3
SL2018.I50-225-C	Steel	12,70 (1/2")	25.40	57.1	14.3	4.75	36.5	57.1	11.2	21.9	16.15	16.5	3/4"-10	22.3
SL2018.I62-225-C	Steel	15,87 (5/8")	25.40	57.1	14.3	4.75	36.5	57.1	11.2	21.9	16.15	16.5	3/4"-10	22.3
SL2018.I25-150-A	Aluminium	6,35 (1/4")	25.40	38.1	14.3	4.75	36.5	57.1	11.2	21.9	16.15	16.5	3/4"-10	22.3
SL2018.I37-150-A	Aluminium	9,53 (3/8")	25.40	38.1	14.3	4.75	36.5	57.1	11.2	21.9	16.15	16.5	3/4"-10	22.3
SL2018.I50-150-A	Aluminium	12,70 (1/2")	25.40	38.1	14.3	4.75	36.5	57.1	11.2	21.9	16.15	16.5	3/4"-10	22.3
SL2018.I50-225-A	Aluminium	12,70 (1/2")	25.40	57.1	14.3	4.75	36.5	57.1	11.2	21.9	16.15	16.5	3/4"-10	22.3
SL2018.I62-225-A	Aluminium	15,87 (5/8")	25.40	57.1	14.3	4.75	36.5	57.1	11.2	21.9	16.15	16.5	3/4"-10	22.3
SL2018.I37-150-S	Stainless	9,53 (3/8")	25.40	38.1	14.3	4.75	36.5	57.1	11.2	21.9	16.15	16.5	3/4"-10	22.3
SL2018.I50-150-S	Stainless	12,70 (1/2")	25.40	38.1	14.3	4.75	36.5	57.1	11.2	21.9	16.15	16.5	3/4"-10	22.3
SL2018.I50-225-S	Stainless	12,70 (1/2")	25.40	57.1	14.3	4.75	36.5	57.1	11.2	21.9	16.15	16.5	3/4"-10	22.3



Spring Loaded Pin - Inch - Ball-Handle non-locking

Spring Loaded Pins



SL2116

SPRING LOADED PINS

Material

Steel Type-

Housing: Steel C1038, not plated.

Plunger assembly: Steel C1038, zinc plated.

Handle: Thermoplastic, black.

Stainless Steel Type-

Housing: Stainless Steel AISI 303.

Plunger assembly: Stainless Steel AISI 303.

Handle: Thermoplastic, black.

Aluminium Type-

Housing: aluminium 6061-T6.

Plunger assembly: Steel C1038, zinc plated.

Handle: Thermoplastic, black.

Technical Notes

Force required to lift handle approx. 2,5Kg.

For both the steel and aluminium plungers, tensile strength is 620 N/mm² except for largest pin size being 400 N/mm².

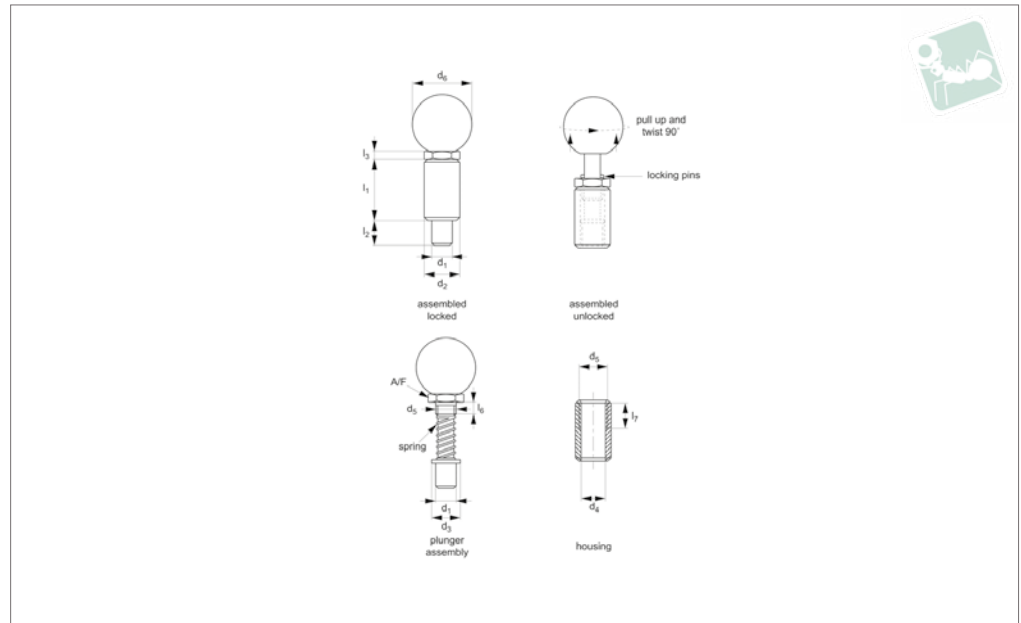
Tips

Housing and plunger assembly supplied as separate elements, this allows housing to be welded in place without damage to plastic handle of plunger assembly. Spring loaded pin is non-locking, pin simply springs back when lever released.

Order No.	Material	d ₁ +0.05 -0.1	d ₂ +0.00 -0.12	l ₁	l ₂	l ₃	l ₆	l ₇	d ₃	d ₄	d ₅	d ₆	A/F
SL2116.I25-150-C	Steel	6,35 (1/4")	25.40	38.1	14.3	4.75	11.2	21.9	16.15	16.5	3/4"-10	35.0	22.3
SL2116.I37-150-C	Steel	9,53 (3/8")	25.40	38.1	14.3	4.75	11.2	21.9	16.15	16.5	3/4"-10	35.0	22.3
SL2116.I50-150-C	Steel	12,70 (1/2")	25.40	38.1	14.3	4.75	11.2	21.9	16.15	16.5	3/4"-10	35.0	22.3
SL2116.I50-225-C	Steel	12,70 (1/2")	25.40	57.1	14.3	4.75	11.2	21.9	16.15	16.5	3/4"-10	35.0	22.3
SL2116.I62-225-C	Steel	15,87 (5/8")	25.40	57.1	14.3	4.75	11.2	21.9	16.15	16.5	3/4"-10	35.0	22.3
SL2116.I25-150-A	Aluminium	6,35 (1/4")	25.40	38.1	14.3	4.75	11.2	21.9	16.15	16.5	3/4"-10	35.0	22.3
SL2116.I37-150-A	Aluminium	9,53 (3/8")	25.40	38.1	14.3	4.75	11.2	21.9	16.15	16.5	3/4"-10	35.0	22.3
SL2116.I50-150-A	Aluminium	12,70 (1/2")	25.40	38.1	14.3	4.75	11.2	21.9	16.15	16.5	3/4"-10	35.0	22.3
SL2116.I50-225-A	Aluminium	12,70 (1/2")	25.40	57.1	14.3	4.75	11.2	21.9	16.15	16.5	3/4"-10	35.0	22.3
SL2116.I62-225-A	Aluminium	15,87 (5/8")	25.40	57.1	14.3	4.75	11.2	21.9	16.15	16.5	3/4"-10	35.0	22.3
SL2116.I37-150-S	Stainless	9,53 (3/8")	25.40	38.1	14.3	4.75	11.2	21.9	16.15	16.5	3/4"-10	35.0	22.3
SL2116.I50-150-S	Stainless	12,70 (1/2")	25.40	38.1	14.3	4.75	11.2	21.9	16.15	16.5	3/4"-10	35.0	22.3
SL2116.I50-225-S	Stainless	12,70 (1/2")	25.40	57.1	14.3	4.75	11.2	21.9	16.15	16.5	3/4"-10	35.0	22.3



SL2118



Material

Steel Type-

Housing: Steel C1038, not plated.
Plunger assembly: Steel C1038, zinc plated.

Handle: Thermoplastic, black.

Stainless Steel Type-

Housing: Stainless Steel AISI 303.
Plunger assembly: Stainless Steel AISI 303.
Handle: Thermoplastic, black.

Aluminium Type-

Housing: aluminium 6061-T6.

Plunger assembly: Steel C1038, zinc plated.

Handle: Thermoplastic, black.

Technical Notes

Force required to lift handle approx. 2,5Kg.

For both the steel and aluminium plungers, tensile strength is 620 N/mm² except for largest pin size being 400 N/mm².

Tips

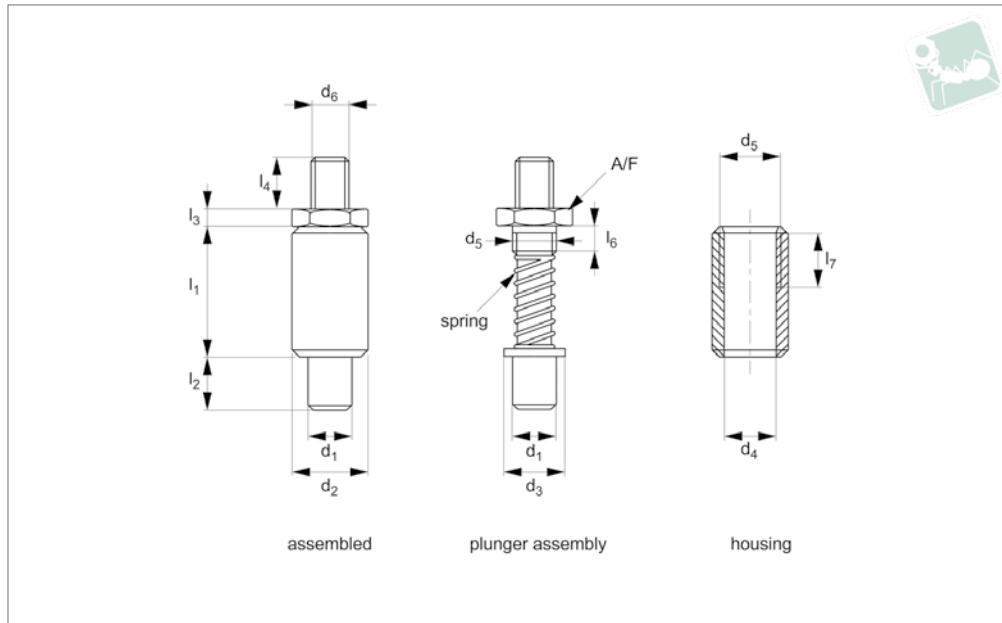
Housing and plunger assembly supplied as separate elements, this allows housing to be welded in place without damage to plastic handle of plunger assembly. Spring loaded pin can be „locked“ to enable pin to be held in retracted/ non-projecting position. Pull back lever, turn 90° to engage ‚locking‘.

Order No.	Material	d ₁ +0.05 -0.1	d ₂ +0.00 -0.12	l ₁	l ₂	l ₃	l ₆	l ₇	d ₃	d ₄	d ₅	d ₆	A/F
SL2118.I25-150-C	Steel	6,35 (1/4")	25.40	38.1	14.3	4.75	11.2	21.9	16.15	16.5	3/4"-10	35.0	22.3
SL2118.I37-150-C	Steel	9,53 (3/8")	25.40	38.1	14.3	4.75	11.2	21.9	16.15	16.5	3/4"-10	35.0	22.3
SL2118.I50-150-C	Steel	12,70 (1/2")	25.40	38.1	14.3	4.75	11.2	21.9	16.15	16.5	3/4"-10	35.0	22.3
SL2118.I50-225-C	Steel	12,70 (1/2")	25.40	57.1	14.3	4.75	11.2	21.9	16.15	16.5	3/4"-10	35.0	22.3
SL2118.I62-225-C	Steel	15,87 (5/8")	25.40	57.1	14.3	4.75	11.2	21.9	16.15	16.5	3/4"-10	35.0	22.3
SL2118.I25-150-A	Aluminium	6,53 (1/4")	25.40	38.1	14.3	4.75	11.2	21.9	16.15	16.5	3/4"-10	35.0	22.3
SL2118.I37-150-A	Aluminium	9,53 (3/8")	25.40	38.1	14.3	4.75	11.2	21.9	16.15	16.5	3/4"-10	35.0	22.3
SL2118.I50-150-A	Aluminium	12,70 (1/2")	25.40	38.1	14.3	4.75	11.2	21.9	16.15	16.5	3/4"-10	35.0	22.3
SL2118.I50-225-A	Aluminium	12,70 (1/2")	25.40	57.1	14.3	4.75	11.2	21.9	16.15	16.5	3/4"-10	35.0	22.3
SL2118.I62-225-A	Aluminium	15,87 (5/8")	25.40	57.1	14.3	4.75	11.2	21.9	16.15	16.5	3/4"-10	35.0	22.3
SL2118.I37-150-S	Stainless	9,53 (3/8")	25.40	38.1	14.3	4.75	11.2	21.9	16.15	16.5	3/4"-10	35.0	22.3
SL2118.I50-150-S	Stainless	12,70 (1/2")	25.40	38.1	14.3	4.75	11.2	21.9	16.15	16.5	3/4"-10	35.0	22.3
SL2118.I50-225-S	Stainless	12,70 (1/2")	25.40	57.1	14.3	4.75	11.2	21.9	16.15	16.5	3/4"-10	35.0	22.3



Spring Loaded Pin - Inch - Threaded non-locking

Spring Loaded Pins



SL2216

SPRING LOADED PINS

Material

Steel Type-

Housing: Steel C1038, not plated.

Plunger assembly: Steel C1038, zinc plated.

Stainless Steel Type-

Housing: Stainless Steel AISI 303.

Plunger assembly: Stainless Steel AISI 303.

Aluminium Type-

Housing: aluminium 6061-T6.

Plunger assembly: Steel C1038, zinc plated.

Technical Notes

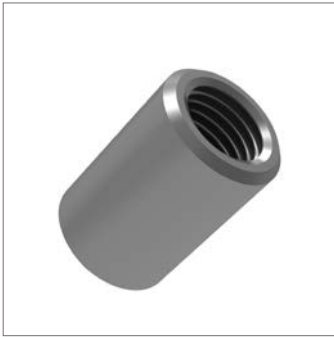
Force required to lift handle approx. 2,5Kg.

For both the steel and aluminium plungers, tensile strength is 620 N/mm² except for largest pin size being 400 N/mm².

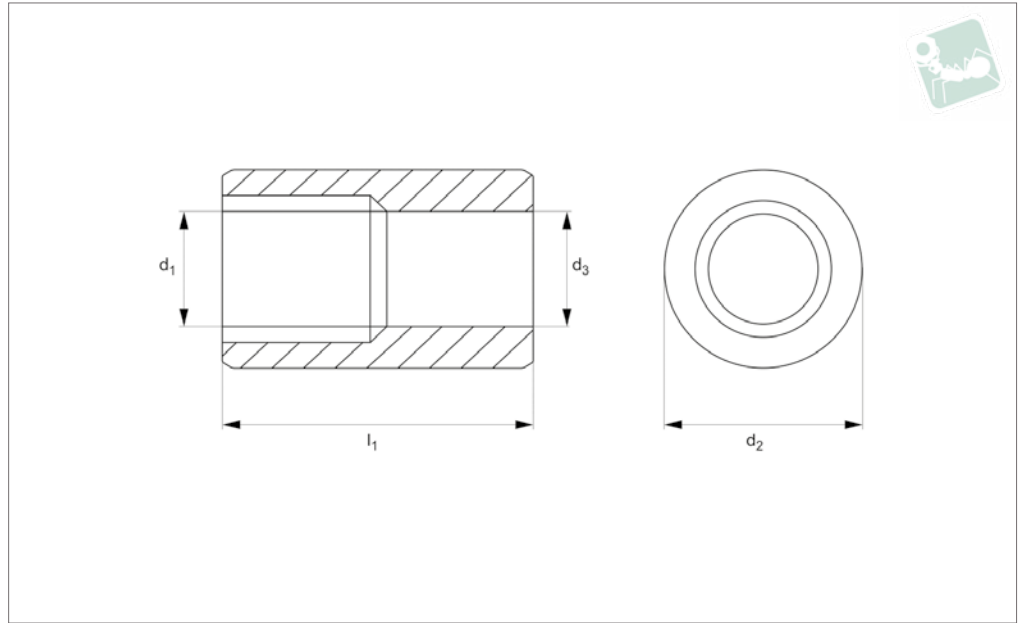
Tips

Housing and plunger assembly supplied as separate elements, this allows housing to be welded in place without damage to plastic handle of plunger assembly. Spring loaded pin is non-locking, pin simply springs back when lever released.

Order No.	Material	d ₁ +0.05 -0.1	d ₂ +0.00 -0.12	l ₁	l ₂	l ₃	l ₄	l ₆	l ₇	d ₃	d ₄	d ₅	d ₆	A/F
SL2216.I25-150-C	Steel	6,35 (1/4")	25.40	38.1	14.3	4.75	36.5	11.2	21.9	16.15	16.5	3/4"-10	3/8"-16	22.3
SL2216.I37-150-C	Steel	9,53 (3/8")	25.40	38.1	14.3	4.75	36.5	11.2	21.9	16.15	16.5	3/4"-10	3/8"-16	22.3
SL2216.I50-150-C	Steel	12,70 (1/2")	25.40	38.1	14.3	4.75	36.5	11.2	21.9	16.15	16.5	3/4"-10	3/8"-16	22.3
SL2216.I50-225-C	Steel	12,70 (1/2")	25.40	57.1	14.3	4.75	36.5	11.2	21.9	16.15	16.5	3/4"-10	3/8"-16	22.3
SL2216.I62-225-C	Steel	15,87 (5/8")	25.40	57.1	14.3	4.75	36.5	11.2	21.9	16.15	16.5	3/4"-10	3/8"-16	22.3
SL2216.I25-150-A	Aluminium	6,35 (1/4")	25.40	38.1	14.3	4.75	36.5	11.2	21.9	16.15	16.5	3/4"-10	3/8"-16	22.3
SL2216.I37-150-A	Aluminium	9,53 (3/8")	25.40	38.1	14.3	4.75	36.5	11.2	21.9	16.15	16.5	3/4"-10	3/8"-16	22.3
SL2216.I50-150-A	Aluminium	12,70 (1/2")	25.40	38.1	14.3	4.75	36.5	11.2	21.9	16.15	16.5	3/4"-10	3/8"-16	22.3
SL2216.I50-225-A	Aluminium	12,70 (1/2")	25.40	57.1	14.3	4.75	36.5	11.2	21.9	16.15	16.5	3/4"-10	3/8"-16	22.3
SL2216.I62-225-A	Aluminium	15,87 (5/8")	25.40	57.1	14.3	4.75	36.5	11.2	21.9	16.15	16.5	3/4"-10	3/8"-16	22.3
SL2216.I37-150-S	Stainless	9,53 (3/8")	25.40	38.1	14.3	4.75	36.5	11.2	21.9	16.15	16.5	3/4"-10	3/8"-16	22.3
SL2216.I50-150-S	Stainless	12,70 (1/2")	25.40	38.1	14.3	4.75	36.5	11.2	21.9	16.15	16.5	3/4"-10	3/8"-16	22.3
SL2216.I50-225-S	Stainless	12,70 (1/2")	25.40	57.1	14.3	4.75	36.5	11.2	21.9	16.15	16.5	3/4"-10	3/8"-16	22.3



SL2316



Material

Steel Type -

Steel, C1038, un-plated, aluminium 6061-T6.

Stainless Steep Type-

Stainless steel (AISI 303).

Technical Notes

Spare housing bodies. For spring loaded pins S to SL2216.

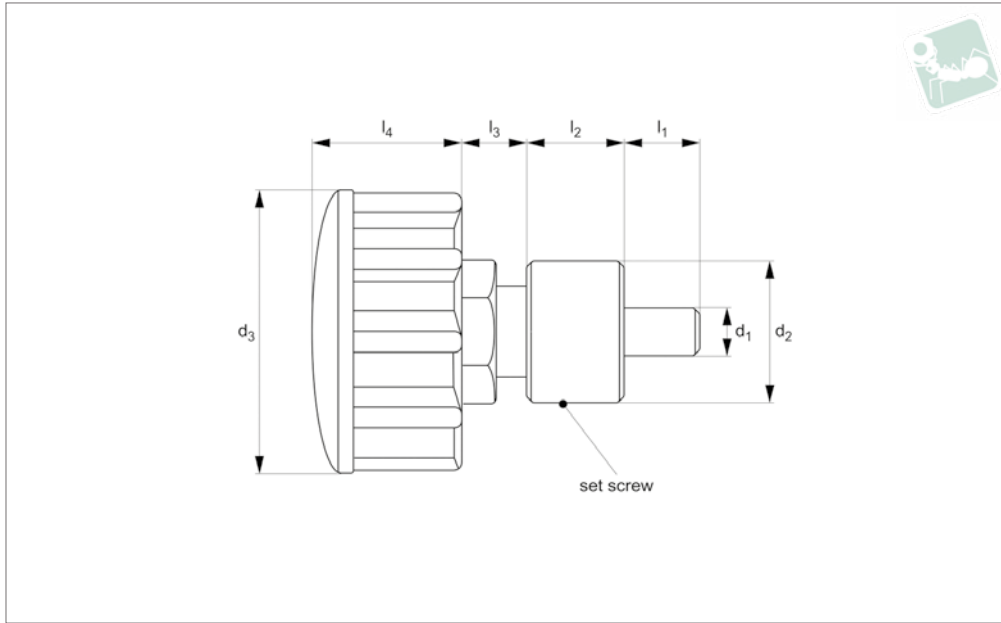
Order No.	Material	d ₁ +0.00 -0.12	d ₂	l ₁	l ₂	d ₃
SL2316.075-150-C	Steel	3/4"-10	25.4	38.1	21.9	16.5
SL2316.075-250-C	Steel	3/4"-10	25.4	57.1	21.9	16.5
SL2316.075-150-A	Aluminium	3/4"-10	25.4	38.1	21.9	16.5
SL2316.075-250-A	Aluminium	3/4"-10	25.4	57.1	21.9	16.5
SL2316.075-150-S	Stainless	3/4"-10	25.4	38.1	21.9	16.5
SL2316.075-250-S	Stainless	3/4"-10	25.4	57.1	21.9	16.5



Spring Loaded Pin - Adjustable

inch - grip handle, weldable

Spring Loaded Pins



SL2516

SPRING LOADED PINS

Material

Housing: Steel, 12L15, un-plated.
 Plunger assembly: Steel, 1038, zinc plated.
 Handle: Thermoplastic

Technical Notes

Ideal for applications where there is a

variance in the part being held. Once the pin is engaged, turning the knob allows the pin to tighten down on the work piece or further extend the plunger into the locating hole.

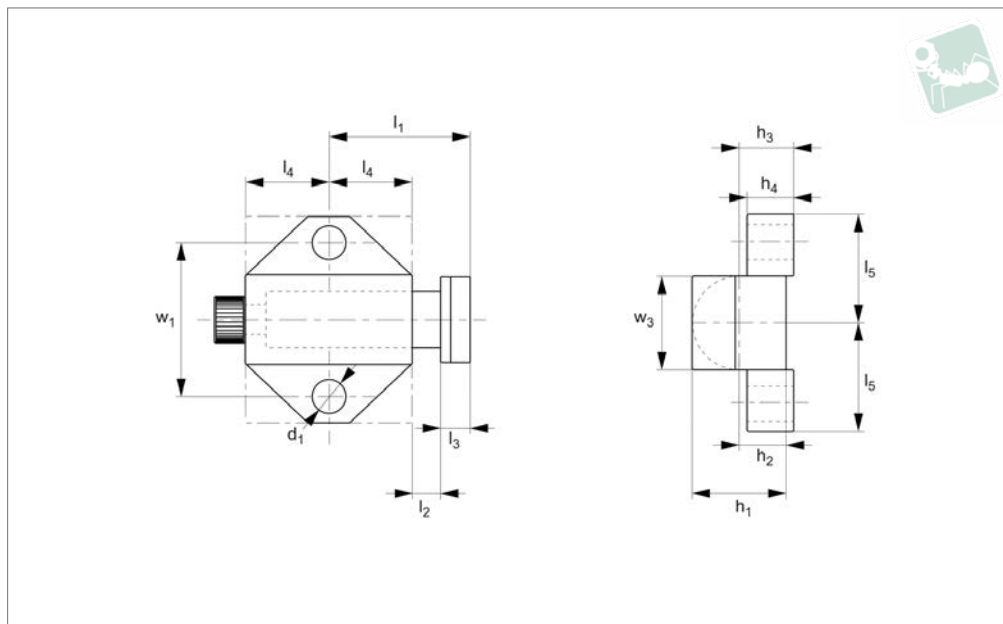
The set screw on the housing allows you to

lock the plunger at a set depth for repeated operations and prevents the mechanism from coming out of the housing.

Order No.	d ₁ +0.05 -0.10	d ₂	l ₁	l ₂	l ₃	l ₄	d ₃	Adjustment
SL2516.025-143-C	6,35 (1/4")	28.5	14.3	19.0	12.7	28.58	57.1	15.8
SL2516.037-143-C	9,53 (3/8")	28.5	14.3	19.0	12.7	28.58	57.1	15.8
SL2516.050-143-C	12,7 (1/2")	28.5	14.3	19.0	12.7	28.58	57.1	15.8



SL2610



Material

Body: Aluminium.

Nose: Steel 12L14.

clamping.

Tips

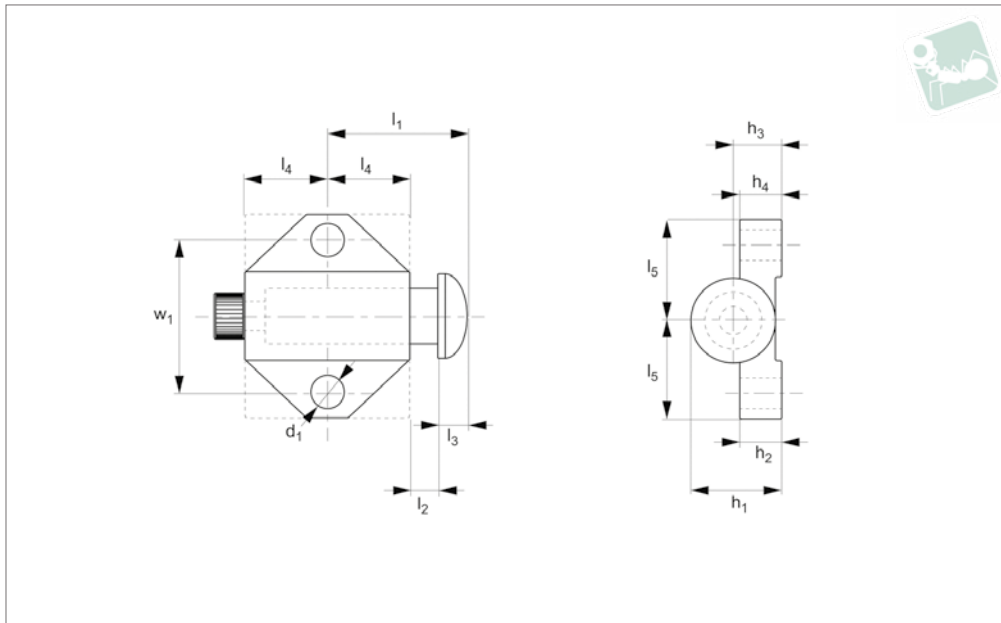
Ideal for holding and securing parts while

Order No.	Mounting base	d ₁	l ₁	l ₂	l ₃	l ₄	l ₅	h ₁	h ₂	h ₃	h ₄	w ₁	w ₃	Spring force N	f ₁	Spring force N	f ₂
SL2610.I12-043-A	Triangle	3.25	15.1	3.18	3.18	8.73	11.1	9.53	4.76	5.56	4.76	16.7	9.53	22.25		66.80	
SL2610.I18-075-A	Square	4.90	23.8	4.76	6.35	12.7	19.1	15.9	7.94	5.56	6.35	28.6	15.9	8.900		115.7	
SL2610.I25-100-A	Square	6.53	31.8	6.35	7.94	14.5	25.4	19.1	9.53	13.4	7.94	38.1	19.1	71.20		213.6	



Spring Stop - Inch round nose

Spring Loaded Pins



SL2615

SPRING LOADED PINS

Material

Body: Aluminium.
Nose: Steel 12L14.

clamping.

Tips

Ideal for holding and securing parts while

Order No.	Mounting base	d ₁	l ₁	l ₂	l ₃	l ₄	l ₅	h ₃	h ₄	h ₅ mm	w ₁	w ₂	Spring force f ₁ N	Spring force f ₂ N
SL2615.I12-043-A	Triangle	3.25	15.08	3.18	3.18	8.73	11.1	5.56	4.76	5.55	16.67	9.53	22.3	66.75
SL2615.I18-075-A	Square	4.90	23.81	4.76	4.76	12.7	19.1	7.94	6.35	22.22	28.58	14.29	8.90	115.7
SL2615.I25-100-A	Square	6.53	29.77	6.35	6.35	17.5	25.4	13.5	7.94	34.13	38.10	20.64	71.2	213.6